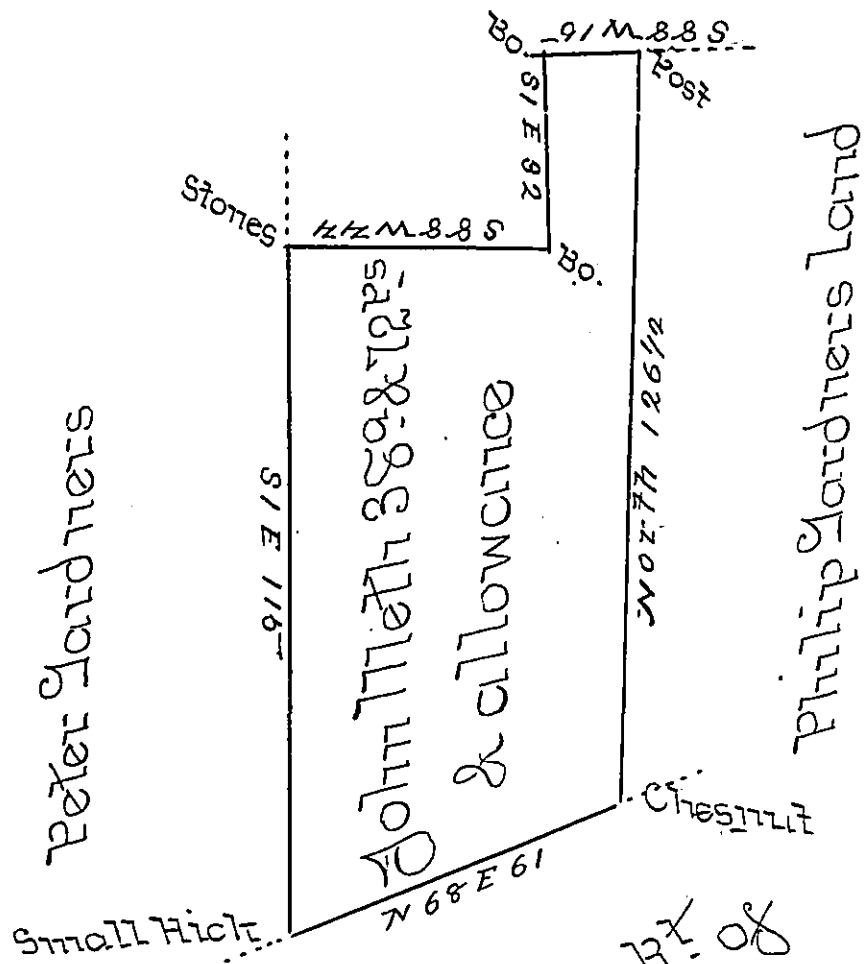


John Meth



John Meth in R. of John Rensha

A Draught of a Tract of land Situate in Helam Township in the County of York Surveyed the 27th day of March 1775 by Charles Suters for John Meth in Pursuance of a Warrant to him dated the 23^d day of January 1775 Containing Thirty eight & Seventy Two perches & allowance and now Returned Agreeably to the Survey of said Suters at the Request of the Owner

John Forsyth D.S.

To Daniel Brodhead Esq^r }
 Surveyor General ~ }

IN TESTIMONY that the above is a copy of the original remaining on file in the Department of Internal Affairs of Pennsylvania, made conformably to an Act of Assembly approved the 16th day of February, 1833, I have hereunto set my Hand and caused the Seal of said Department to be affixed at Harrisburg, this second day of August 1898

Jameau W. Pitta
 Secretary of Internal Affairs.